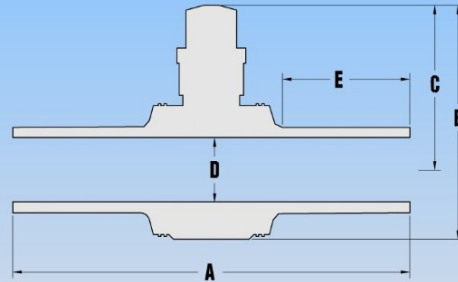


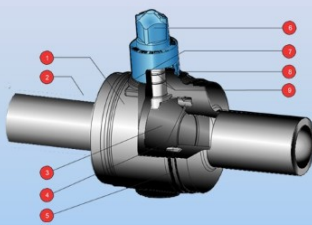
ACCESSORIES: POLYBALL VALVES

This robust American made polyethylene ball valve has a high strength polyethylene ball for a long life and low operating torque. A reliable Buna-N ball seat giving it a wide temperature range, dual o-rings and weather seal which protects from ground water and dirt. It is corrosion-free, maintenance-free and a valve with independent third party evaluation. Insuring the highest performance and reliability.



Valve Sizes and Dimensions (Approx. Inches) Full Port

Size	Part Number	A	B	C	D	E	Cv
1 1/4" FULL PORT POLYBALL SDR11 w / Socket Fusion Coupling (FAB)	SFPV66FP-K	13.8	6.9	5.2	1.38	4.2	49
2" FULL PORT POLYBALL SDR11 w / Socket Fusion Coupling (FAB)	SFPV66FP-K	21.0	9.7	7.0	1.90	7.4	180
1 1/4" FULL PORT POLYBALL SDR11 Butt Fusion	BFPV66FP-K	11.8	6.9	5.2	1.38	3.2	49
2" FULL PORT POLYBALL SDR11 Butt Fusion	BFPV88FP-K	19	9.7	7.0	1.90	6.4	180
3" FULL PORT POLYBALL SDR11 Butt Fusion	BFPV1010FP-K	21	12.2	8.7	2.70	6.4	400
4" FULL PORT POLYBALL SDR11 Butt Fusion	BFPV1111FP-K	25	14.8	10.2	3.63	7.6	710
6" FULL PORT POLYBALL SDR11 Butt Fusion	BFPV1212FP-K	27	19.6	13.2	5.25	7.0	1900
8" FULL PORT POLYBALL SDR11 Butt Fusion	BFPV1414FP-K	28	25.5	17.2	6.70	5.3	3750



NO	Component	Material	Features and Benefits
1	Body	POLYETHYLENE	PE 4710, flat base, robust design
2	Ends	POLYETHYLENE	PE 4710, various SDR'S
3	Ball	POLYPROPYLENE	High strength, long life and low operating torque
4	Retainer	POLYPROPYLENE	Positive restraint under any condition; Retains seat under high differential pressure
5	Ball Seat	BUNA-N	Reliable sealing, 32°F to 140°F
6	Actuator	POLYPROPYLENE	2" operating square, positive position indication, over-torque protection
7	Weather Seal	BUNA-N	Protects from ground water and dirt
8	Stem	ACETAL	Excellent durability and strength, blowout proof*
9	Stem Seals	BUNA-N	Redundant sealing with dual o-rings

*Stem is SS on 1 1/2" FP & 1 1/4" FP sizes

Size	Part Number
STREET KEY FOR POLYETHYLENE VALVE, 2 THRU 12"	PV-KEY-2



ALL THE "PUMP" YOU NEED AND MORE

1-866-646-6724
712-652-3424
www.bdmfginc.com